



# SAFE-T Program

Megan Heere, MD

Associate Professor of Clinical Pediatrics  
Lewis Katz School of Medicine at Temple  
University

Medical Director, Well Baby Nursery  
Temple University Hospital

March 20, 2018

# Objectives

- Discuss the implementation of the SAFE-T Program
- Share the progress of the program
- Explain future directions for the program and related research



# SAFE-T Program

(Sleep Awareness Family Education at Temple)

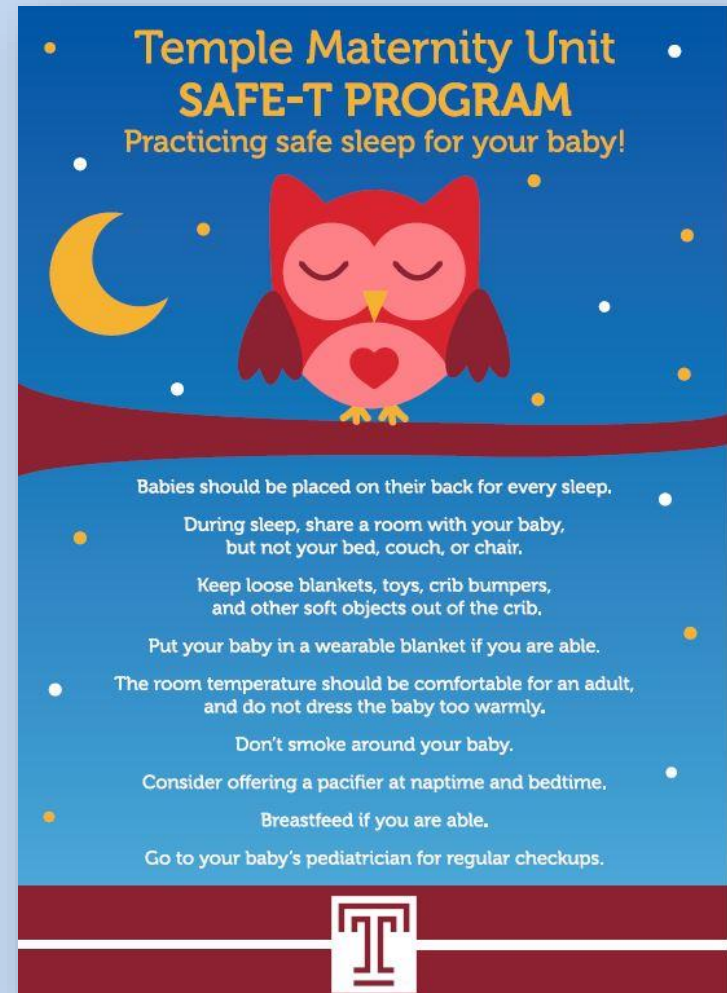
- Educational component
  - Started February 1, 2016
- Baby Box component
  - Started May 6, 2016



# SAFE-T Program

(Sleep Awareness Family Education at Temple)

- Educational intervention
  - Nurses trained to educate families
  - Magnet script
  - Graduation certificate
  - Documented in EMR



# SAFE-T Program

(Sleep Awareness Family Education at Temple)



**Congratulations!**

**Jeff Heere**

(Baby's Name)



**TEMPLE HEALTH**



Megan G. Heere, MD  
Director, SAFE-T Program  
Assistant Professor of Clinical Pediatrics,  
Lewis Katz School of Medicine at Temple University



Larry R. Kaiser, MD, FACS  
Senior Executive Vice President for Health Affairs, Temple University  
Dean & Professor of Surgery, Lewis Katz School of Medicine at Temple University  
President & CEO, Temple University Health System



Lornajane Braunsar, RN, BSN  
Nurse Manager, Maternity  
Temple University Hospital

**Graduated  
from the  
SAFE-T  
Program**

**Sleep  
Awareness  
Family  
Education  
at  
Temple**



# SAFE-T Program

(Sleep Awareness Family Education at Temple)

- Baby Box
  - Cardboard bassinet and supplies
    - Prepared by volunteers
  - Distributed in Finland since 1938
  - Purchased from The Baby Box Company
  - One box per baby
  - Instructional video on use of box
  - Given to parent on day of discharge



# SAFE-T Program

(Sleep Awareness Family Education at Temple)

- Program Progress
  - Discussions with different organizations
  - Quality improvement work on the distribution



# SAFE-T Program

(Sleep Awareness Family Education at Temple)

- Future endeavors

- Research

- Effect of the program over the first year of life
    - Effect of the program on overall rates of sleep-related death in Philadelphia
    - Effect of other statewide programs on infant mortality and sleep related deaths

